

# Campbell River Master Transportation Plan & Dogwood Corridor Study - Survey #1

---

## Help us plan how we will move now and in the future!

The City of Campbell River is updating its 2012 Master Transportation Plan to [a] assess the current network and its key challenges, [b] identify where the greatest opportunities are to improve transportation options across the city, and [c] position the City to be ready for the future as transportation trends continue to evolve. The City is looking for a new, comprehensive, and visionary transportation plan with sustainability as its main guiding principle. The City is also undertaking the Dogwood Corridor Study, which will look at opportunities to improve active transportation options while maintaining the mobility of the corridor for vehicle traffic and business access.

Please check out the project website for additional project information and ways to participate: <https://www.campbellriver.ca/mtp2022>

## About the Survey

This initial survey will guide our subsequent work and is intended to provide a snapshot of transportation conditions and needs in Campbell River today. The survey should take approximately 10-15 minutes to complete, and all responses will be kept confidential and anonymous. The survey will be open until **11:59pm on August 6, 2022**. Thank you for your time and participation! Let's get started.

*All survey responses will be confidential. Responses will not be identified by individual, but will be compiled together and analyzed as a group.*

# Travel Patterns and Behaviour

---

**1) Within the Campbell River area, what are the places you most commonly travel to? (Select up to five)**

- Campbellton
- Campbell River Community Centre
- Campbell River Hospital
- Downtown
- North Campbell River (north of the river)
- North Island College
- Quadra Island
- South of Jubilee Parkway
- Sportsplex
- Willow Point
- Other - Write In: \_\_\_\_\_

**2) What is your main mode of transportation when commuting to work or school? (Select one option only)**

- Private Vehicle - Drive
- Private Vehicle - Passenger
- Public Transit
- Walking
- Biking
- Scooter or mobility device (e.g., kick scooter, electric kick scooter, mobility scooter, wheelchair)
- Other - Write In: \_\_\_\_\_

**3) What is your main mode of transportation for all other trips, such as going to the grocery store, recreating, visiting family and friends, etc.? (Select one option only)**

Private Vehicle - Drive

Private Vehicle - Passenger

Public Transit

Walking

Biking

Scooter or mobility device (e.g., kick scooter, electric kick scooter, mobility scooter, wheelchair)

Other - Write In: \_\_\_\_\_

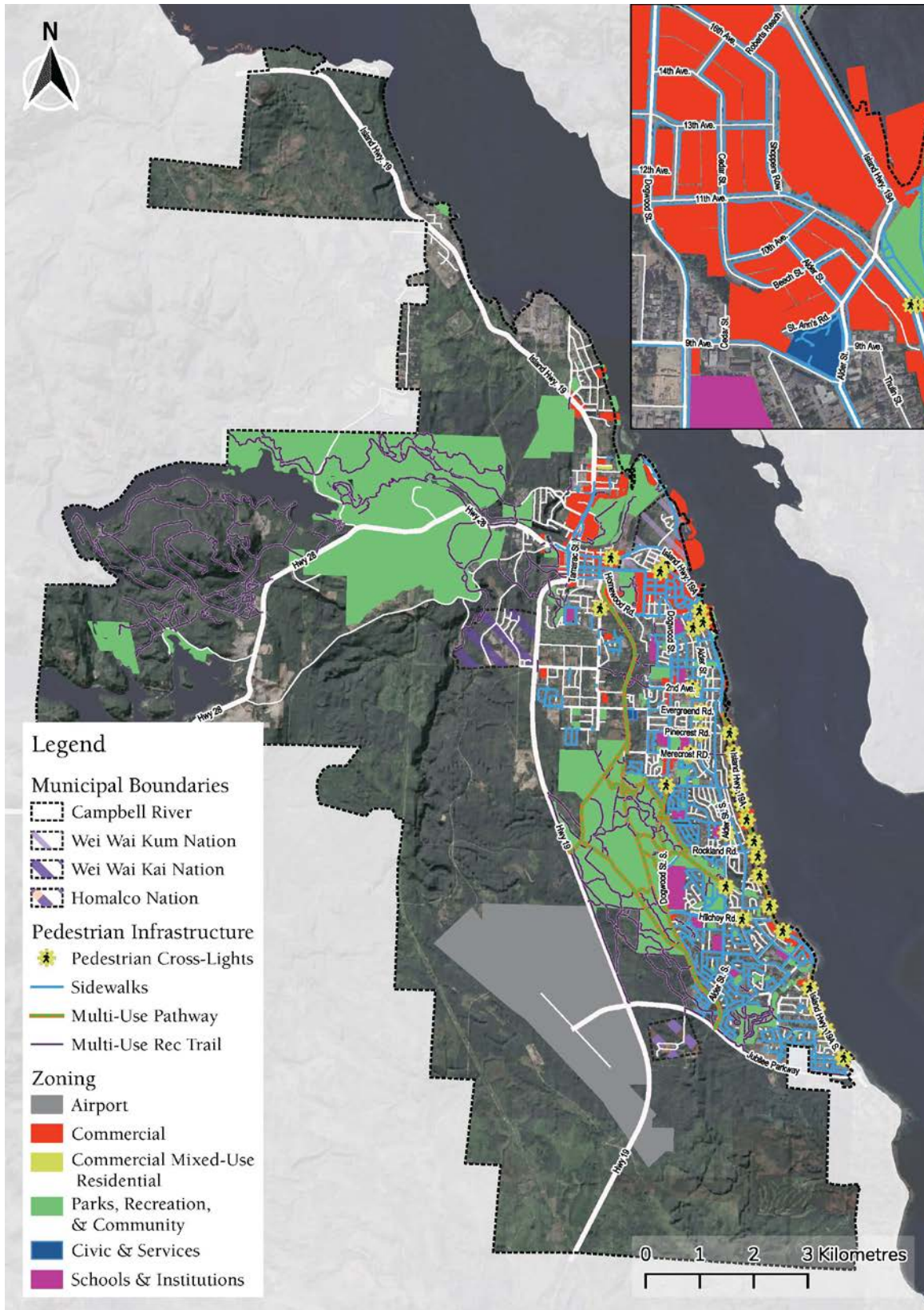
**4) If you do use active transportation modes of travel to move around Campbell River, please indicate the frequency of use.**

	<b>Never</b>	<b>Rarely (1-2 times per month)</b>	<b>Occasionally (3-4 times per month)</b>	<b>Frequently (1-2 times per week)</b>	<b>Always (Daily)</b>
Walk	( )	( )	( )	( )	( )
Non- motorized bike	( )	( )	( )	( )	( )
Electric bike (e-bike)	( )	( )	( )	( )	( )
Mobility aid	( )	( )	( )	( )	( )
Public transit	( )	( )	( )	( )	( )
Skateboard / rollerblade	( )	( )	( )	( )	( )
Kick scooter	( )	( )	( )	( )	( )
Other	( )	( )	( )	( )	( )

## **Current Barriers & Opportunities**

---

We want to make it easier for you to get around Campbell River by addressing barriers that might otherwise make it a challenge. This section includes a series of maps to help you respond to the questions. The map below illustrates the City's existing pedestrian network.



**5) In general, what are the top issues / barriers you face walking around Campbell River today? (Select up to three)**

- Speed of motor vehicle traffic
- Poor quality sidewalks and other pedestrian facilities (i.e., gaps in network)
- Sidewalks and pathways are too narrow or obstructed
- Lack of sidewalks
- Inadequate street trees / buffer between sidewalk and motor vehicle traffic
- Uncomfortable crossing at signalized intersections
- Uncomfortable crossing at non-signalized intersections
- Vehicles not yielding / stopping at designated crosswalks
- Maintenance of existing sidewalks
- Poor street lighting on sidewalks and crossings
- Deficient curb ramps
- Inadequate wayfinding signage
- Other - Write In: \_\_\_\_\_

**6) What are the top three roads in Campbell River that you feel unsafe walking on? Please refer to the map above when responding to the question.**

Number 1: \_\_\_\_\_

Number 2: \_\_\_\_\_

Number 3: \_\_\_\_\_

**7) What are the top opportunities you would like to see to improve the walking environment in Campbell River? (Select up to three)**

***Please refer to the pedestrian network map above when responding to the question.***

- Improve sidewalk condition (e.g., fixing cracks, trip hazards)
- Increase sidewalk widths
- More separation from motor vehicle traffic (e.g., street trees / boulevard or bike lanes)
- Improve accessibility of sidewalks (e.g., addressing deficient curb ramps)

Better amenities at bus stops (e.g., seating, lighting, secure bike parking, real-time transit information)

Improve street / pathway lighting

Filling in gaps in the network to improve connections to local destinations

Improve crossings at signalized intersections

Lower the posted speed limit

Add traffic calming devices to help slow motor vehicle traffic

No improvements

Other - Write In: \_\_\_\_\_

**8) Is there anything else you would like to share with us about how we can improve the walking environment in Campbell River? (100 words or less)**

---

---

---

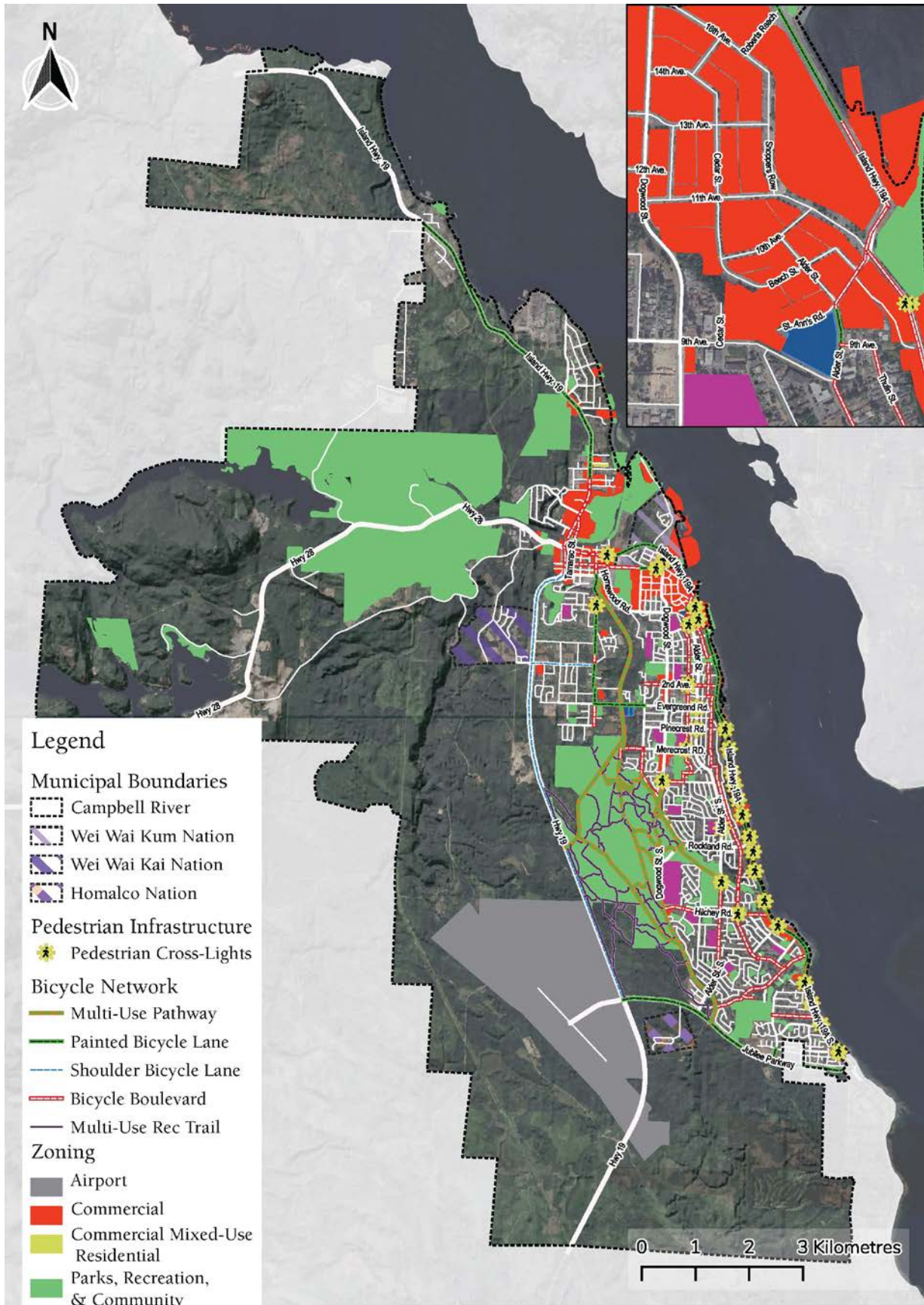
---

**9) In general, what are the top issues / barriers you face cycling or using another active mode (e.g., skateboarding, scootering, wheelchair, mobility scooter) around Campbell River today? Note: for the purposes of this survey, using another active mode includes a skateboard, electric kick scooter, etc. (Select up to three).**

***Please refer to the cycling network map below when responding to the question.***

- Speed of motor vehicle traffic on Major Roads (e.g., Arterial, Collector)
- Speed of motor vehicle traffic on Local Roads
- Poor connections to key destinations
- Uncomfortable cycling on arterial roads without painted bike lanes (e.g., Dogwood St, Alder St, Rockland Rd)
- Uncomfortable cycling on local roads
- Inadequate protection at intersections (e.g., conflicts with people driving, walking, biking)
- Lack of separation between people walking and cycling on multi-use pathways and trails
- Topography (i.e., too hilly)
- Lack of secure bike parking
- Lack of end-of-trip facilities (e.g., bike racks, shower facilities, lockers, etc.)
- Poor street lighting
- Inadequate wayfinding signage
- Other - Write In: \_\_\_\_\_





**10) What are the top three roads in Campbell River that you feel unsafe cycling on? Please refer to the map above when responding to the question.**

Number 1: \_\_\_\_\_

Number 2: \_\_\_\_\_

Number 3: \_\_\_\_\_

**11) The City has several 'Arterial Roads' including Highway 19A, Alder Street, Dogwood Street, 2nd Avenue, Hilchey Road, and many more. The City also has several 'Collector Roads', which include Evergreen Road, Pinecrest Road, and Mercroft Road. What are the improvements you would like to see on the Arterial Roads and Collector Roads to feel more comfortable cycling? (Select up to three)**

- Improve wayfinding signage
- More separation / protection from vehicles along corridors
- Better separation / protection from vehicles at intersections
- Lower the posted speed limit
- Traffic calming devices to slow vehicle traffic (e.g., curb extensions, speed humps, rumble strips, narrower lanes etc.)
- Improve street lighting
- Improve maintenance of facilities (e.g., removal of snow, leaves, gravel)
- No improvements
- Other - Write In: \_\_\_\_\_

**12) Is there anything else you would like to share with us about how we can improve the cycling conditions in Campbell River? (100 words or less)**

---

---

---

---

## Current Barriers & Opportunities, continued.

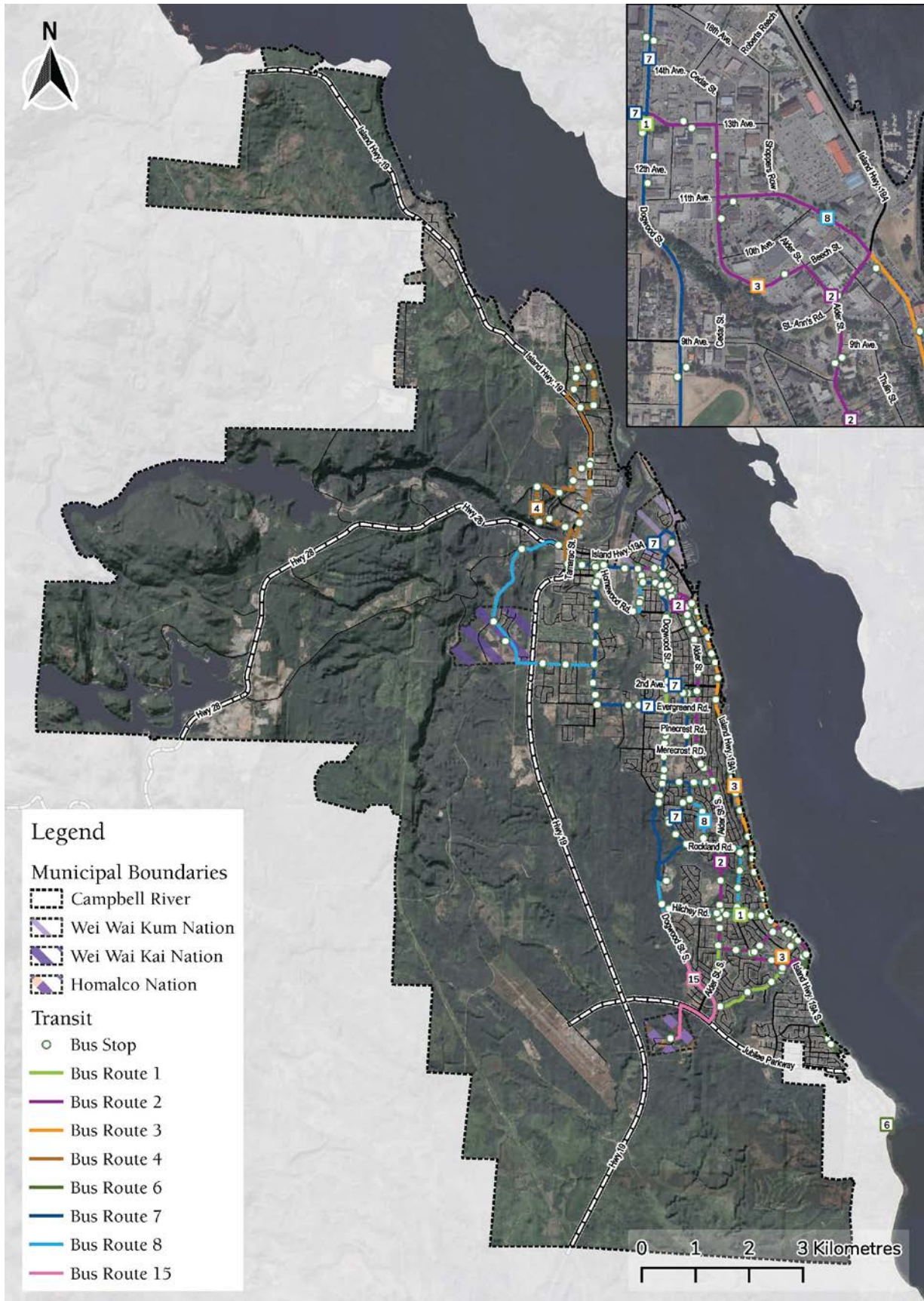
---

**13) What makes using transit within and through Campbell River difficult for you?  
(Select up to three)**

***Please refer to the transit network map below when responding to the question.***

- Lack of wayfinding signage
- Transit is too infrequent
- Transit is unreliable (e.g. bus arrival times are unpredictable)
- Cost of transit is too high
- Lack of direct routes to get to my usual destinations
- Routes take too long to get to my usual destinations
- Bus stops are far away / hard to get to
- Transporting my kids/family/heavy loads is difficult by transit
- Feeling unsafe on transit
- Lack of benches or covered areas at my bus stop
- Lack of paratransit options, lack of infrastructure to support people with mobility challenges and physical impairments
- I am not familiar with the transit system
- I have no transit-related challenges
- Other - Write In: \_\_\_\_\_





**14) Recognizing that transit service is largely under the jurisdiction of BC Transit, what could we do to make it easier to use transit within and through Campbell River? (Select up to three)**

- Increase transit frequency
- Prioritize implementation of the Frequent Transit Corridor (15 minutes or better service on Dogwood Street and Highway 19A)
- Make transit routes more direct
- Expand transit routes
- Increase service on evenings and weekends
- Provide express service on select routes
- Improve or provide bus stop amenities (e.g., shelters, benches, trash bins)
- Increase number of bus stops
- Improve lighting at bus stops
- Make bus stops more accessible
- I am not interested in taking transit
- Other - Write In: \_\_\_\_\_

**15) Is there anything else you would like to share with us about how we can improve transit in Campbell River? (100 words or less)**

---

---

---

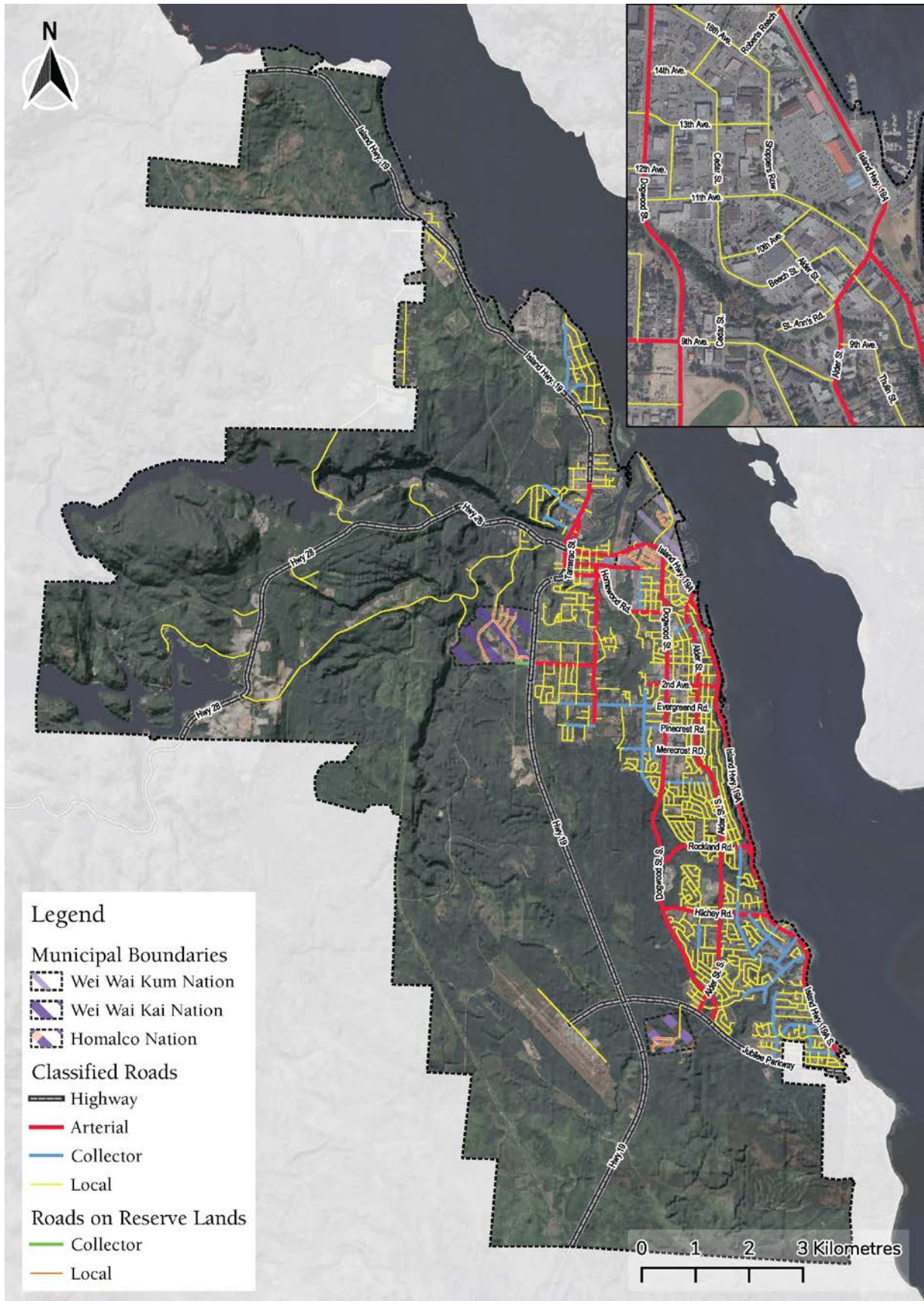
---

**16) What makes driving within and through Campbell River difficult for you?  
(Select up to three)**

***Please refer to the road network map below when responding to the question.***

- Poor condition of road infrastructure
- Unsafe intersections
- Too much traffic congestion when I need to travel
- Hard to access destinations
- Parking is hard to find
- Feeling unsafe
- Vehicle cost/maintenance cost
- Do not own a vehicle
- I have no driving-related challenges
- Other - Write In: \_\_\_\_\_





**17) What could we do to make it easier to drive within and through Campbell River (*Select up to three*)**

- Provide more off-street parking at key destinations
  - Provide more on-street parking at key destinations
  - Build new roads
  - Widen existing roads
  - Improve intersection safety
  - Improve traffic signal timing
  - Provide better access to highways
  - Ensure residential streets are properly maintained
  - Create physical separation between vehicles and cyclists
  - Provide carpooling and car-sharing opportunities
  - Provide private electric vehicle (EV) charging
  - Provide public electric vehicle (EV) charging
  - I am not interested in driving
  - Other - Write In (Required):
- 

**18) Is there anything else you would like to share with us about how we can improve the driving conditions in Campbell River? (*100 words or less*)**

---

---

---

---



# Dogwood Corridor

---

As part of the Transportation Master Plan Update, the City is also looking at the Dogwood Street corridor. Dogwood Street is a major arterial road that runs north-south, the entire length of Campbell River. It is a four-lane roadway, with a speed limit of 50km/hr (north end) and 60km/hr (south end). It runs through residential and commercial land uses and provides connections to four schools. The City is looking for options for the future design of Dogwood Street that improves overall safety and capacity for vehicle traffic / trucks while providing more space to accommodate other road users including people walking, cycling, and transit.

**19) What are the highest priority transportation improvements you would like to see to the Dogwood Corridor (*Select up to three*)**

- Improve intersection safety
- Improve traffic signal timing
- Improve vehicle traffic flow
- Create physical separation between vehicles and people cycling
- Create physical separation between vehicles and people walking
- Provide more frequent transit service
- No improvements
- Other - Write In: \_\_\_\_\_

# Vision for Campbell River's Future Transportation Network

---

20) Imagine Campbell River in 20 years. We have successfully implemented the Master Transportation Plan. One bold, ambitious part of the plan stands out. What is it? (100 words or less)

---

---

---

---

21) The Master Transportation Plan will guide our transportation-related decisions over the next 20 years. Looking forward, what are the most important issues the updated Plan should address? Please rank the following in order of importance (1=most important, 7=least important):

- \_\_\_\_\_ Traffic congestion
- \_\_\_\_\_ Maintenance and upkeep of transportation infrastructure
- \_\_\_\_\_ Improved and expanded transit service
- \_\_\_\_\_ Safety for drivers
- \_\_\_\_\_ Climate change and improved air quality
- \_\_\_\_\_ Affordability of travel for all residents
- \_\_\_\_\_ Pedestrian and cycling safety
- \_\_\_\_\_ Preparing for new and emerging mobility technologies such as electric bikes, e-scooters, driverless or autonomous vehicles

## About You

---

We would now like to ask you a few final questions for statistical purposes only, to help us classify our survey results.

### **22) Which of the following age groups do you belong to?**

- 19 years and under
- 20-29 years
- 30-39 years
- 40-49 years
- 50-59 years
- 60-69 years
- 70+ years

### **23) What is your gender?**

- Male
- Female
- Two-spirit
- Non-binary
- I prefer not to answer

### **24) Does anyone in your household regularly use a mobility device (e.g., mobility aid, wheelchair)?**

- Yes
- No

**25) Is there anything else you would like to share with us? (100 words or less)**

---

---

---

---

---

---

## **Thank You!**

Thank you for taking our survey! Your response is very important to us.

For more information about how to get involved, visit the project website at: [www.campbellriver.ca/mtp2022](http://www.campbellriver.ca/mtp2022)

---