



## TENDER 19-07

### WATERFRONT SEWER UPGRADES PHASE II

#### ADDENDUM NO. 4

April 11<sup>th</sup>, 2019

**This addendum forms part of the Tender Documents** and shall be read, interpreted, and coordinated with all other parts. The costs of all elements contained herein shall be included in the submission. The following revisions, changes, corrections, additions, and or deletions supersede the information contained in the original Documents to the extent referenced and shall become part thereof.

#### **Addendum Item 1 - Questions and Answers**

---

**1. Proponent Question:**

Supplementary Specifications page 1 of 2 1.1.1.4 Submittals, refers to Weekly Environmental Monitoring Reports as per Form of Tender 5.1.1.g. There is no 5.1.1.g in the Form of Tender. Can you please provide this information?

**Response:**

Add to the following to the Form of Tender; Section 5.1.1.g:

a Construction Environmental Protection Plan.

**2. Proponent Question:**

Please advise on any water discharge requirements (eg. Turbidity) for the optional tender item 4a (Well Point De-watering).

**Response:**

The requirements are contained within Supplemental Specification 01 53 01 Temporary Facilities issued with Addendum No.2.

**3. Proponent Question:**

I'm told by suppliers that the 813mm x 200mm FxF SCH40 reducer detailed in the FORCEMAIN LOW POINT DRAIN DETAIL on drawing 8 of 8, cannot be manufactured. Could you consider a re-design to this item?

A similar connection is detailed within the 19-08 tender drawings as a 750mm blind flange c/w 200 IPT and ss 200mm spool that is threaded on one end and flanged on the other. These parts appear to be readily available.

**CITY OF CAMPBELL RIVER  
TENDER 19-07  
WATERFRONT SEWER UPGRADES PHASE II  
ADDENDUM NO. 4**

---

**Response:**

Replace the 813 mm x 200 mm FxF SCH40 reducer with a 750 mm x 200 mm FxF SCH40 spool as per the revised detail on Sheet 8 of 8 attached.

**4. Proponent Question:**

With regards to line item 19 'Thermo plastic Zebra Crosswalk', drawings indicate to Restore Thermoplastic Paint, please confirm this applies only to areas disturbed by construction, and not restoration of the complete crosswalk.

**Response:**

The reinstatement of the zebra crosswalk thermoplastic line marking only applies to the areas disturbed by construction.

**5. Proponent Question:**

What is the pressure in the existing forcemain at the location of the AVT EZ Valve installation?

**Response:**

±207 kPa (30 psi).

**6. Proponent Question:**

Assuming bid Item #33 (Appendix 1B) is for the gate valves on the air valve assemblies, should the correct quantity be 9 since there are 3 gate valves on each of the 3 air valve assemblies?

**Response:**

The gate valves off the force main are measured under this item. The remainder of the air valve assembly is measured under item #37.

**7. Proponent Question:**

With reference to Addendum #3, Q&A #3, there are no 200mm HH gate valves on the low point drains. Your detail on Sheet 8 shows 1 each of 200mm FF and 200mm HF gate valves.

**Response:**

See sheet 8 of 8 rev D, where there are 200 mm H x H gate valves.

**8. Proponent Question:**

Bid Item #43 (Appendix 1B) and detail "PH #3 TIE-IN DETAIL" on Sheet 8 would be applicable for this contract Option 1 and not Option 2. Where is the payment item for an Option 2 (750mm) tie-in at 0+000?

**CITY OF CAMPBELL RIVER  
TENDER 19-07  
WATERFRONT SEWER UPGRADES PHASE II  
ADDENDUM NO. 4**

---

**Response:**

Item description from #43 [Tie-in – 750 mm diam. FL gate valve to 813 mm diam. pipe at STA 0+000] to follow item 39, as item 39a, under Option 1. Updated items are highlighted in blue.

**9. Proponent Question:**

The tie-in at 0+000 whether it is for 813mm (Option 1) or 750mm (Option 2) will require a second scenario for both depending on which option in Phase 3 is selected for the valve (750 or 600 Gate Valve).

**Response:**

New item 43 under Option 2 “Tie-in – 750 mm diam. FL gate valve to 750 mm diam. pipe at STA 0+000”. Updated items are highlighted in blue.

New item 43a under Option 2 above “Tie-in – 600 mm diam. FL gate valve to 750 mm diam. pipe at Sta 0+000; (**Optional Work**). Updated items are highlighted in blue.

**10. Proponent Question:**

Can permanent asphalt reinstatement with the City’s paving contractor be scheduled for 2019 immediately upon completion of this contract, or will further utility upgrades planned for next year impact permanent surface reinstatement?

**Response:**

The Contractor is to coordinate paving with the City’s paving contractor in 2019 to satisfy specification 31 23 01 3.6.7.

**11. Proponent Question:**

Supplementary Specifications Section 01 55 00 par 1.5.5 refers to payment for Changeable Message Signs. There is other mention of these signs and no bid item for this. Are Changeable Message signs required?

**Response:**

Changeable message signs are not required.

**12. Proponent Question:**

There is a pay item for precast headwalls, however, there is no pay item for cement filled sand bag headwalls as noted on Sheet C8. How will these sandbag/cement headwalls be paid for?

**Response:**

The Schedule of Quantities and Prices have been revised, replace Appendix 1B (issued 04April2019) with **Appendix 1C (issued 11April2019)**. Updated items are highlighted in blue.

**CITY OF CAMPBELL RIVER  
TENDER 19-07  
WATERFRONT SEWER UPGRADES PHASE II  
ADDENDUM NO. 4**

---

**Addendum Item 2 – BC Hydro Pole Relocation**

---

All BC Hydro costs related to any required pole relocations will be bourn directly by the Owner. The Contractor is still responsible for any necessary coordination so as to include the related tasks within the Construction Schedule.

**Addendum Item 3 – Question & Answer Period**

---

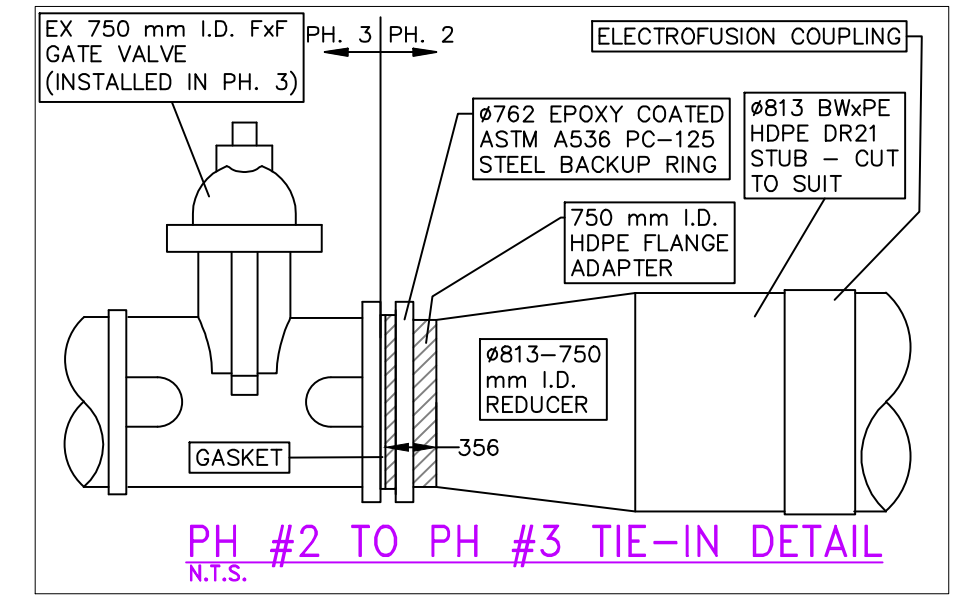
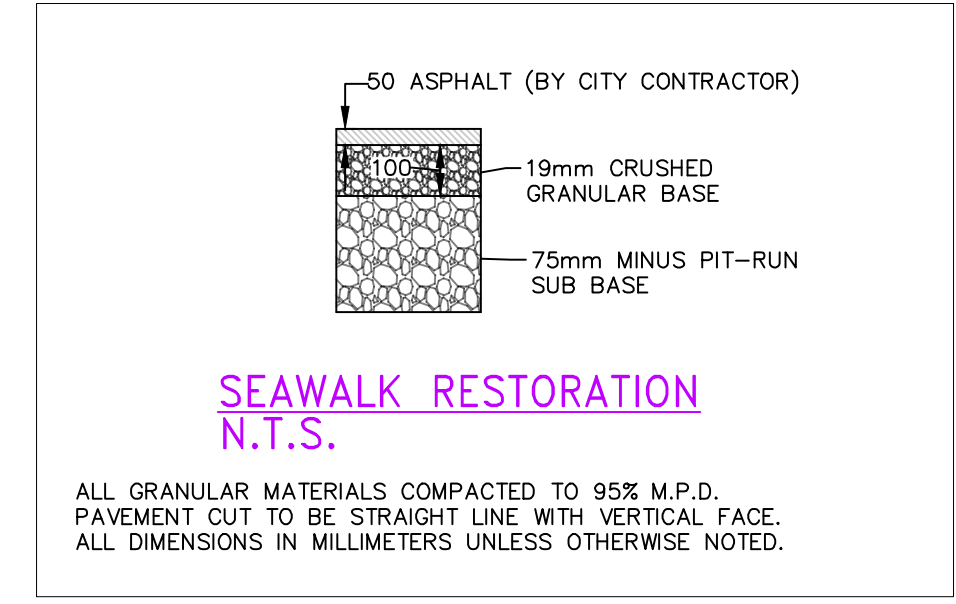
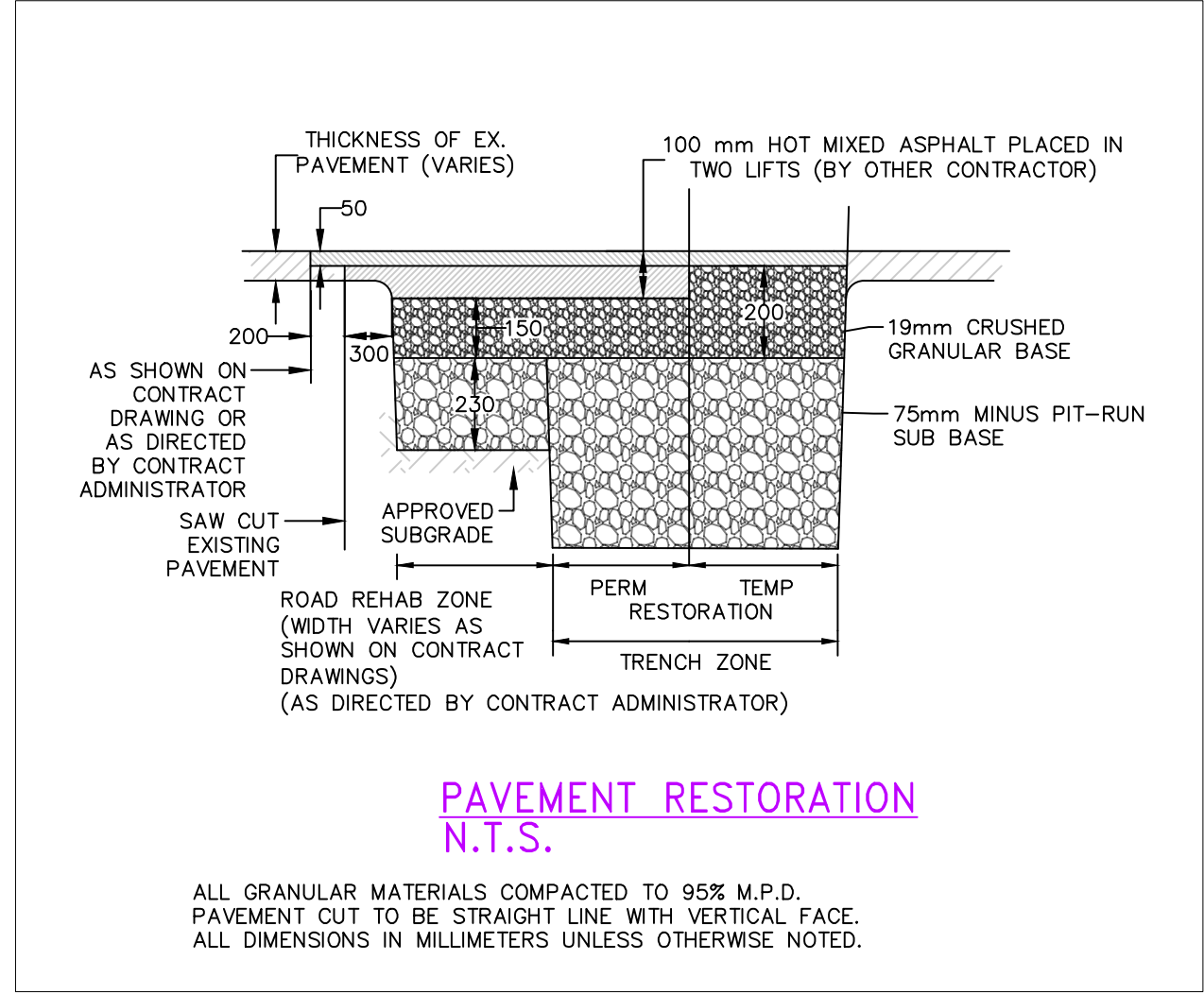
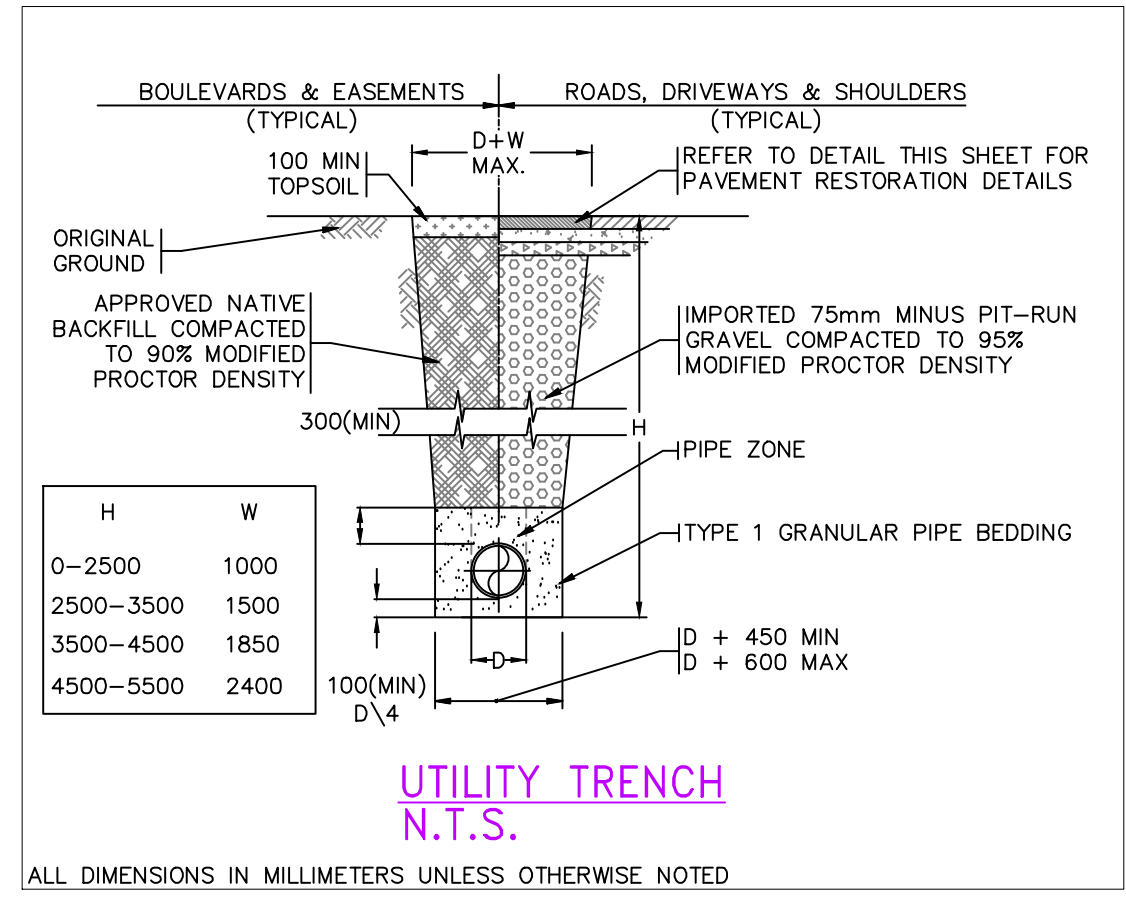
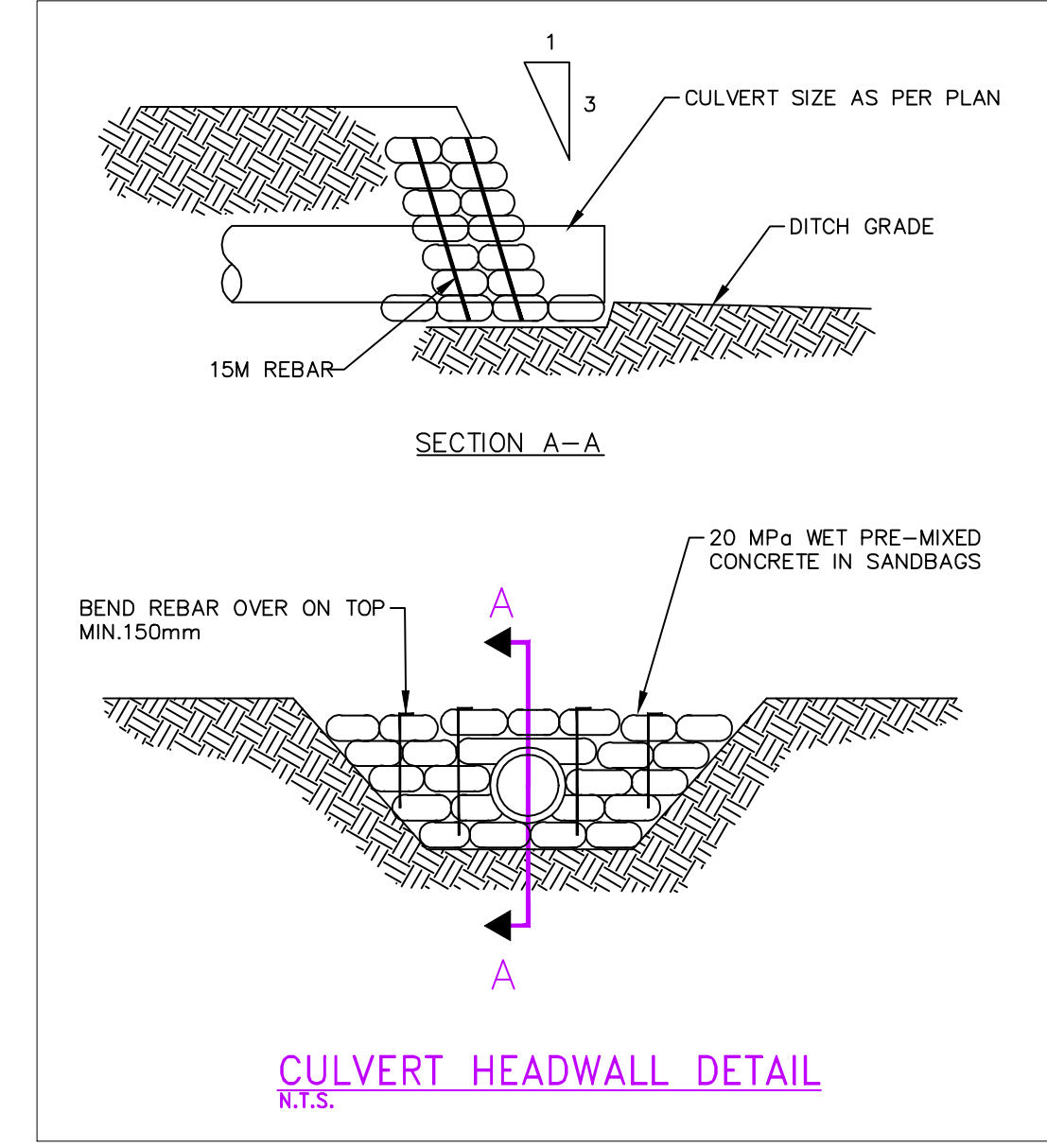
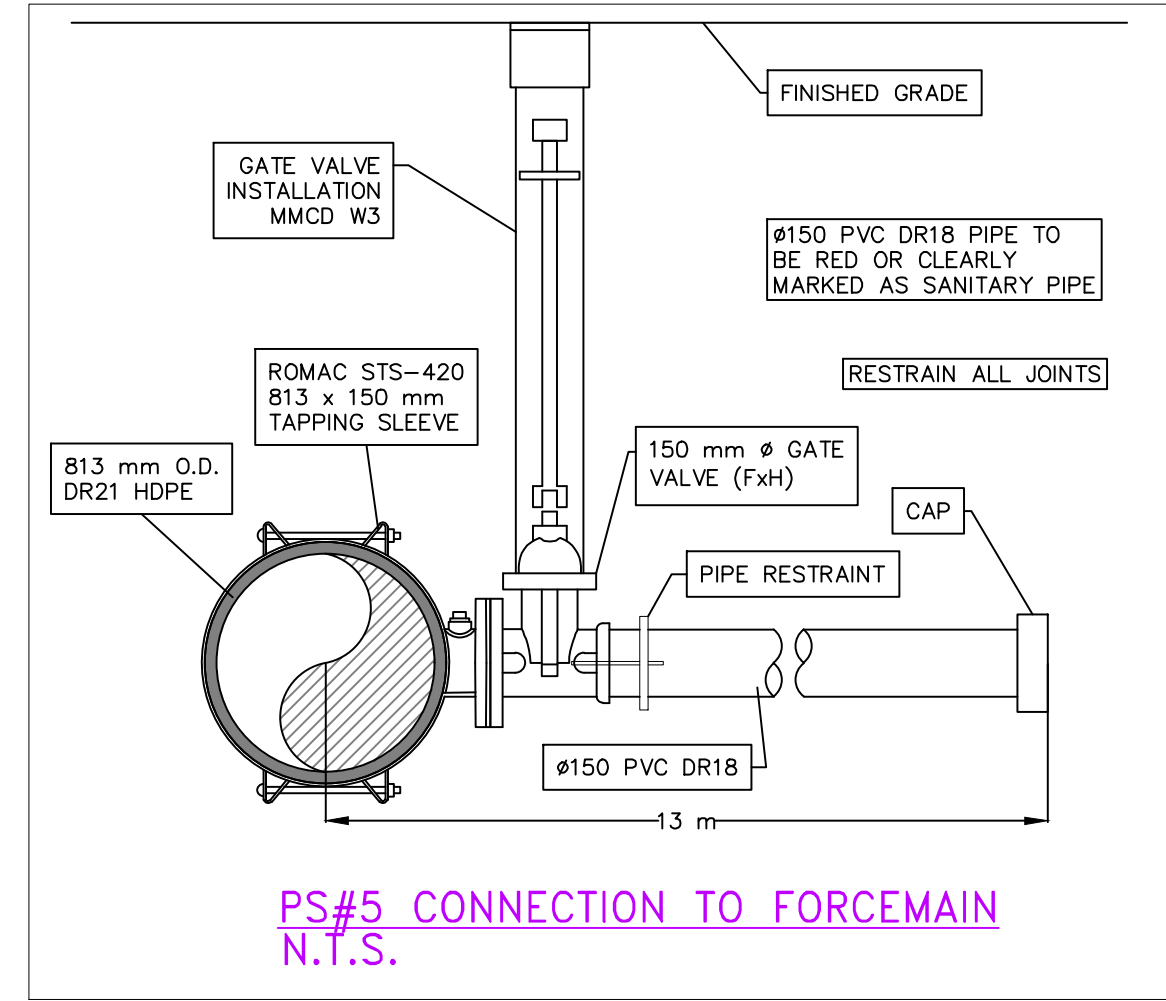
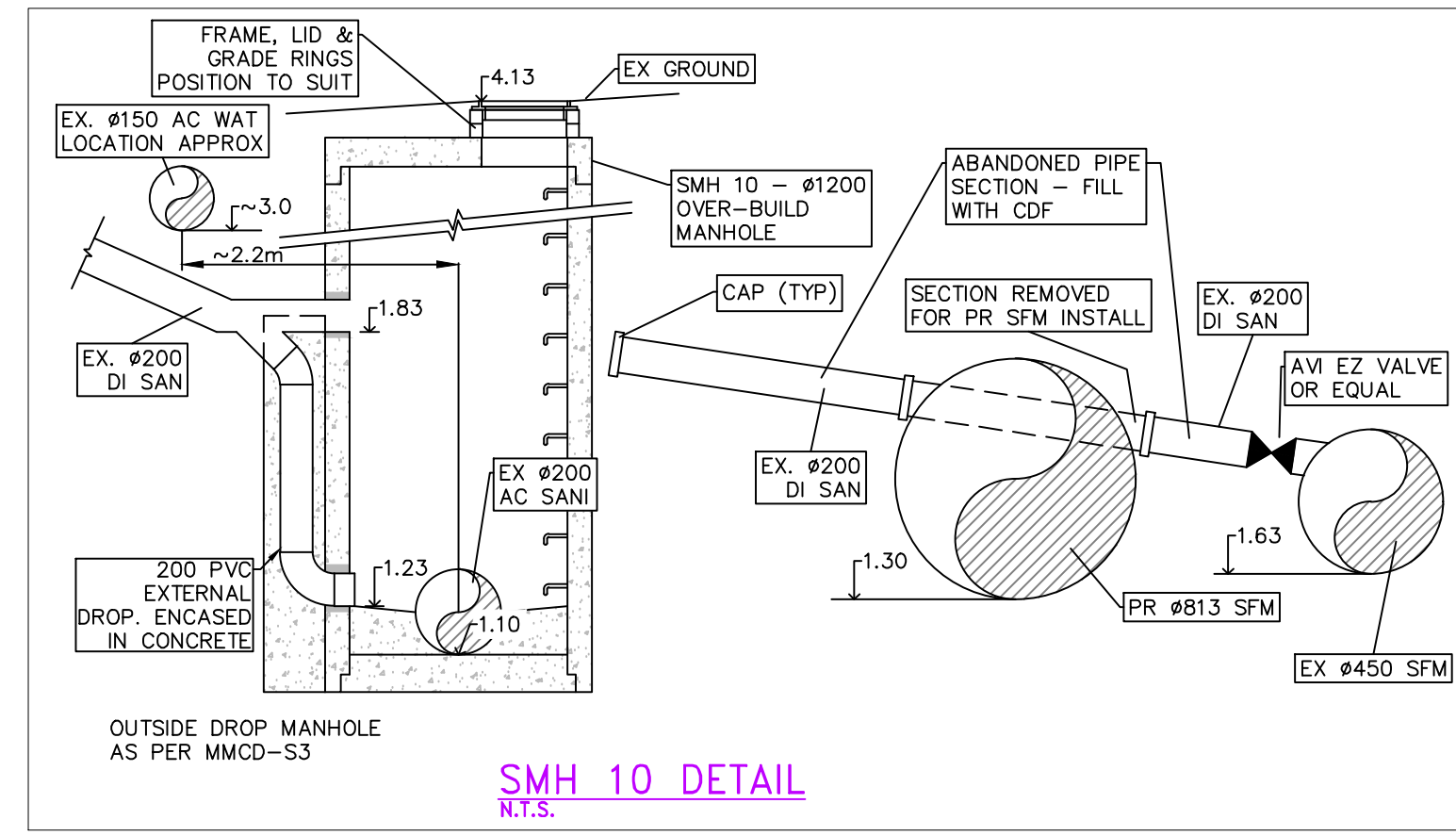
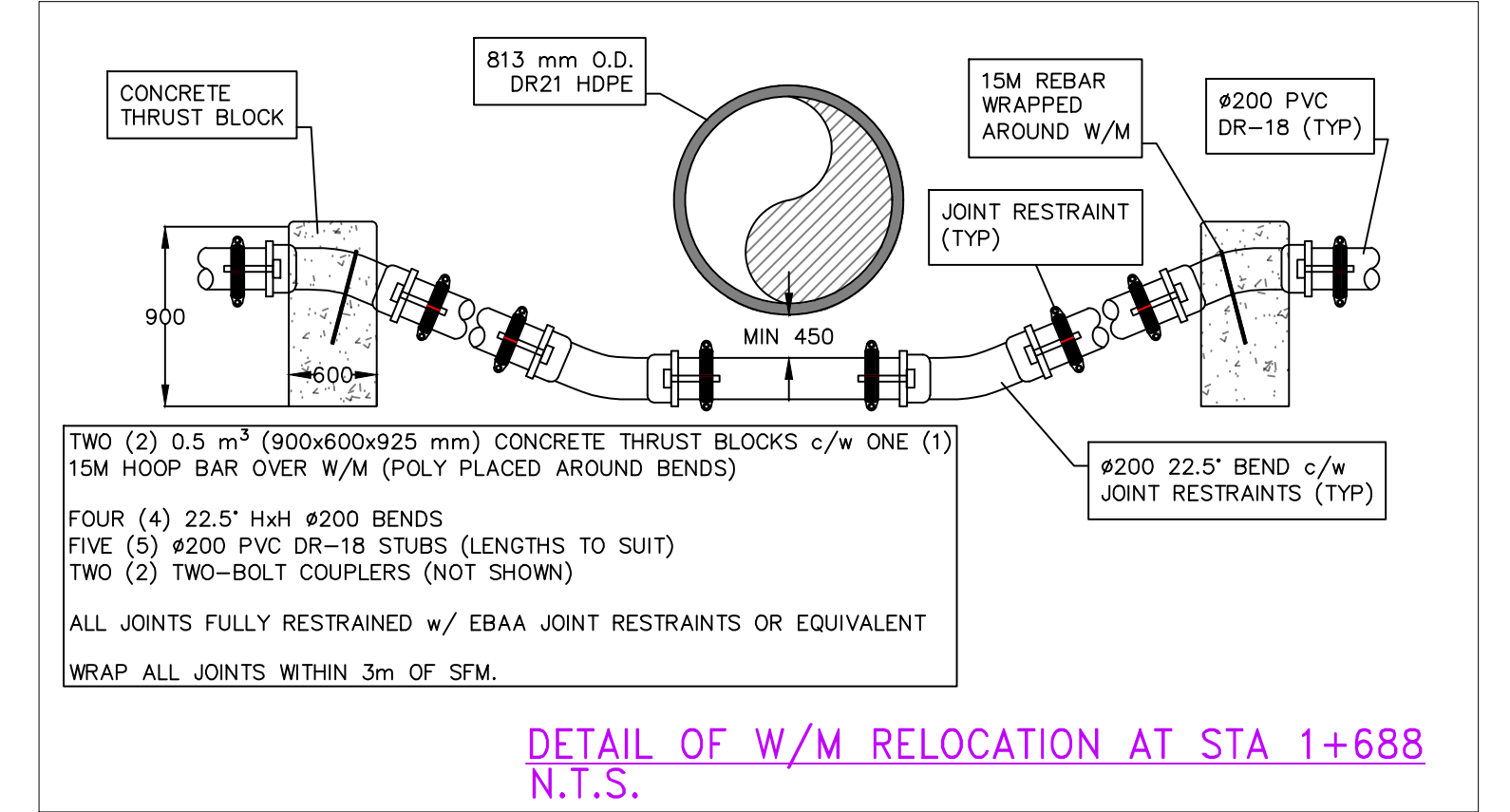
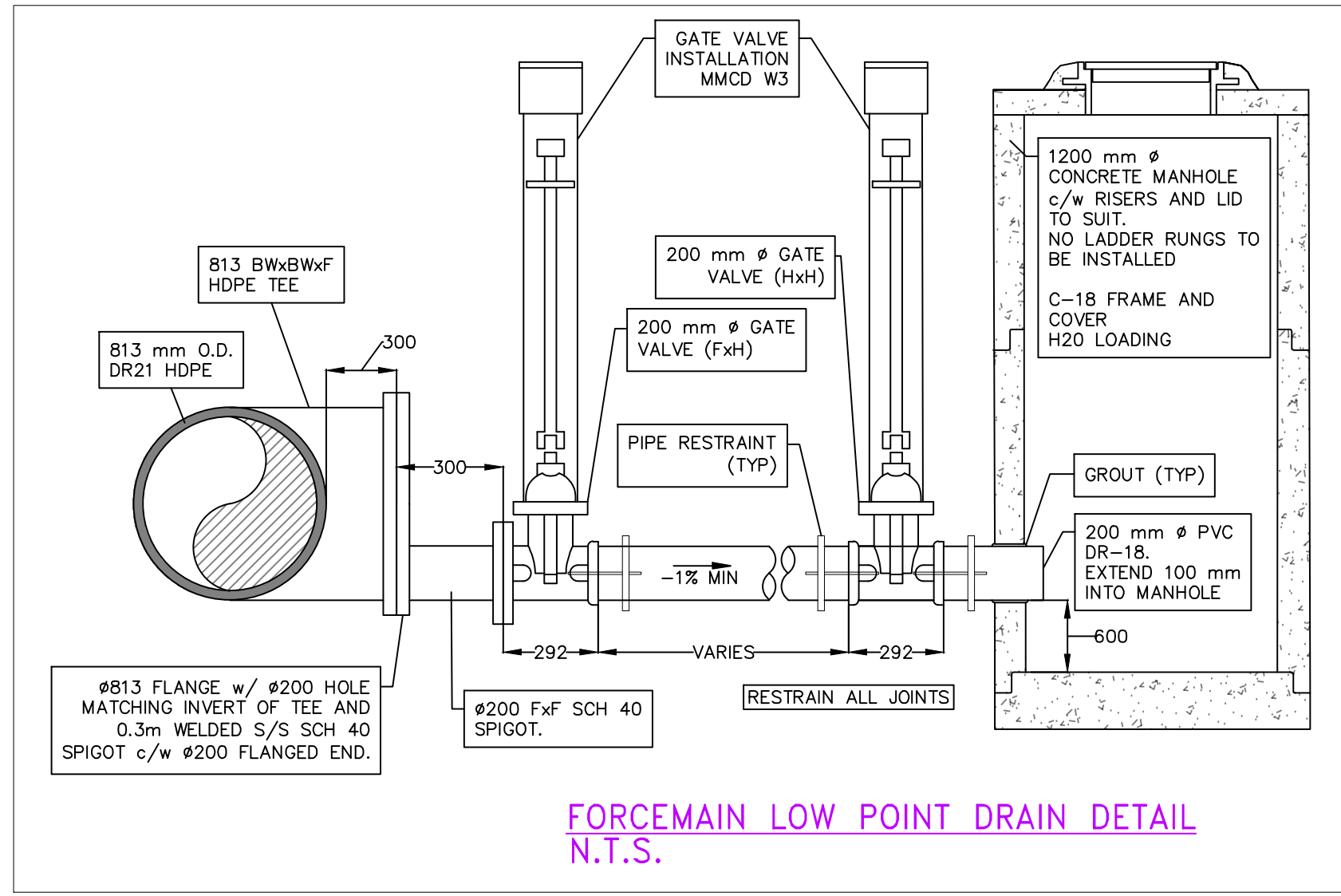
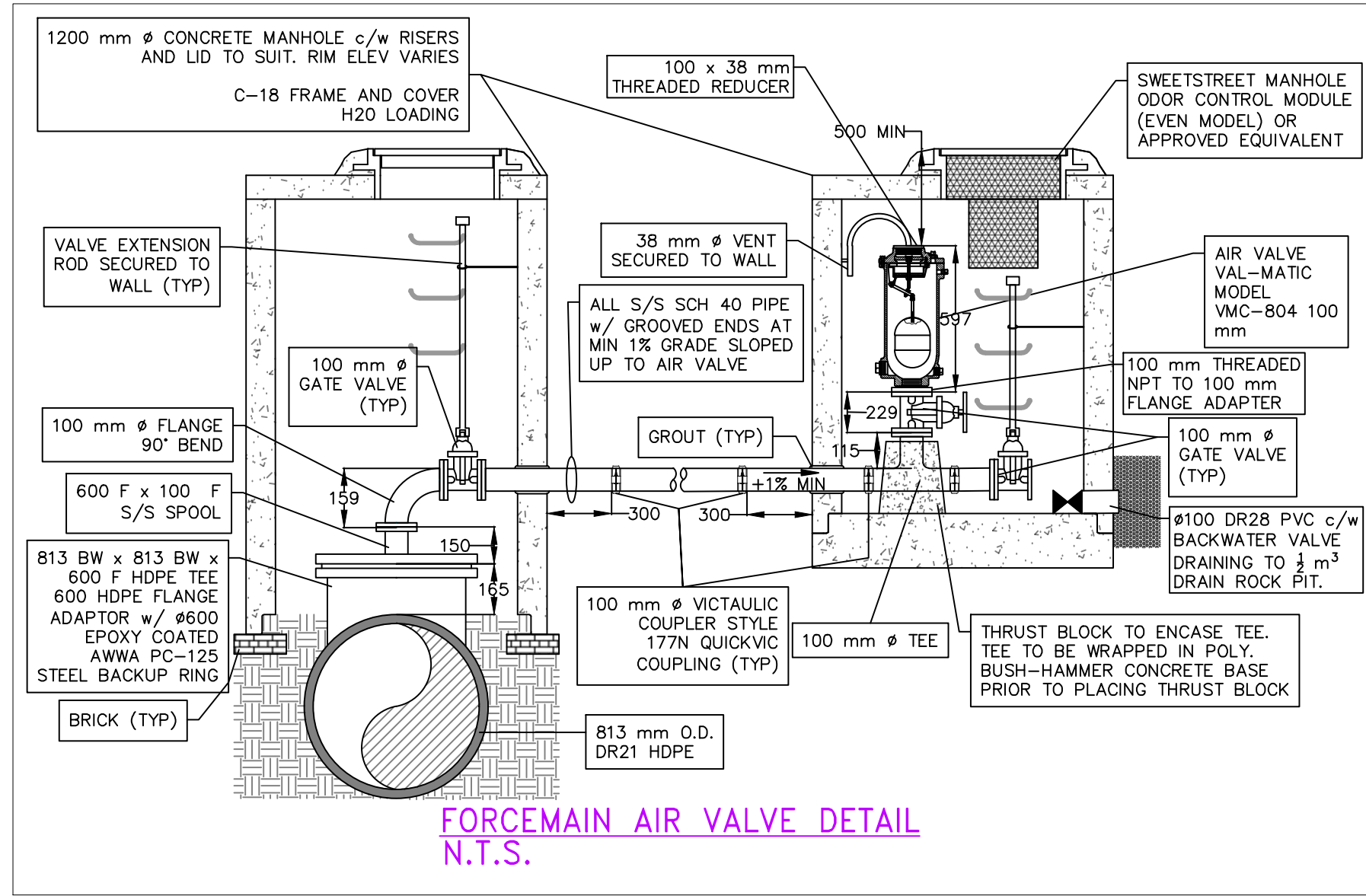
The question and answer period is now closed and no further questions, clarifications, or requests will be considered due to the tender closing on Friday April 12<sup>th</sup>, at 3:00pm (local time).

**End of Addendum**

**Acknowledgement of this Addendum in your Tender submission is required.**

Clinton J. Crook, SCMP, CPSM  
Purchasing & Risk Management Officer





COPYRIGHT HIGHLAND ENGINEERING SERVICES LTD. K:\Land Projects\_3\4075\DWG\Phase 2\4075-02 - BASE.dwg Apr. 8, 19 3:08:21 PM

---	---	---	---	T	U/G TELEPHONE	T	S	SANITARY SEWER	---	S	O.D.	OPEN DITCH	---	O.D.
---	---	---	---	H	U/G HYDRO	H	D	STORM DRAIN	---	D	SMH	SANITARY MANHOLE	---	SMH
---	---	---	---	G	NATURAL GAS	G	W	WATER MAIN	---	W	DMH	STORM MANHOLE	---	DMH
D	LOW POINT DRAIN DETAIL CHANGED	FG	19/04/08	P	PERMEABLE PAVING	P	C	CURB & GUTTER	---	C	---	CATCH BASIN	---	---
B	DETAILS CHANGED	FG	19/03/28	---	---	---	---	---	---	---	---	---	---	---
B	DETAIL ADDED	FG	19/09/20	---	---	---	---	---	---	---	---	---	---	---
A	ISSUED FOR TENDER	FG	19/03/12	---	---	---	---	---	---	---	---	---	---	---

**HIGHLAND**  
Engineering Services Ltd.

#104-950 Alder Street,  
Campbell River, B.C.  
V9W 2P8

(250) 287-2825  
highland@highland-eng.ca  
www.highland-eng.ca

DESIGNED: GB  
SCALE: AS SHOWN  
DRAWN: FG  
DATE: JAN 2019  
CHECKED: GB  
DATE: MAR 2019  
APPROVED: RKS  
DATE: MAR 28, 2019

TITLE:  
**CITY OF CAMPBELL RIVER**  
WATERFRONT SEWER SYSTEM UPGRADES - PH 2  
CAMPBELL RIVER, BC  
HWY 19A  
DETAILS SHEET

CITY DWG #  
19-507-C8

PROJECT:  
4075-02

SHEET 8 OF 8

ISSUE D

ISSUED FOR TENDER

CALL BEFORE YOU DIG!  
1-800-474-6886  
or by CELLULAR \*6886  
CALL AT LAST 3 FULL WORKING DAYS BEFORE START OF WORK

DESTROY PRINTS OF PREVIOUS REVISION

**Appendix 1C**

(issued 11 April 2019)

**SCHEDULE OF QUANTITIES AND PRICES – GST EXCLUDED**

(See paragraph 5.3.1 of the Instructions to Tender – Part II)

(All prices and Quotations including the Contract Price shall include all Taxes, but shall not include GST, GST shall be shown separately)

Item	MMCD Ref.	Description	Unit	Quantity	Unit Price	Amount
<b>01 - GENERAL ITEMS</b>						
<b><u>01 01 01 Mobilization and Demobilization</u></b>						
1	1.1.1-1.1.5	Mobilization & Demobilization (maximum 10% of Tender Price)	LS	1		
<b><u>01 33 01 Project Record Documents</u></b>						
2	1.8.1	Project record documents	LS	1		
<b><u>01 52 01 Temporary Structures</u></b>						
3	1.6.1	Temporary structures	LS	1		
<b><u>01 53 01 Temporary Facilities</u></b>						
4	1.9.1	Sanitary facilities, site storage, loading and hoardings	LS	1		
4a	1.9.1	Mobilization & demobilization of well pointing de-watering and water treatment equipment ( <b>Optional Work</b> )	LS	1		
4b	1.9.2	Operation and maintenance of well pointing de-watering equipment ( <b>Optional Work</b> )	day	56		
4c	1.9.3	Operation and maintenance of water treatment equipment ( <b>Optional Work</b> )	day	56		
<b><u>01 55 00 Traffic Control, Vehicle Access and Parking</u></b>						
5	1.5.1	Traffic control, vehicle access and parking	LS	1		
<b><u>01 57 01 Environmental Protection</u></b>						
6	1.6.1	Temporary erosion and sediment control	LS	1		

Sub-Total Page 9: \$

Tenderer's Initial    Owner's Initial

--	--

**CITY OF CAMPBELL RIVER  
TENDER 19-07  
WATERFRONT SEWER UPGRADES PHASE II  
FORM OF TENDER**

Item	MMCD Ref.	Description	Unit	Quantity	Unit Price	Amount
<b>31 - EARTHWORKS</b>						
<b><u>31 22 16.1 Reshaping Existing Subgrade</u></b>						
7	1.4.2	Remove unsuitable subgrade ( <i>Optional Work</i> )	m <sup>3</sup>	100		
<b><u>31 23 01 Excavating, Trenching and Backfilling</u></b>						
8	1.10.3	Over-excavation including backfilling ( <i>Optional Work</i> )	m <sup>3</sup>	150		
9	1.10.9	Pre-locate all the existing utilities	ea	63		
<b><u>31 23 17 Rock Removal</u></b>						
10	1.6.4/5	Boulders and rock fragments - blasting not permitted ( <i>Optional Work</i> )	m <sup>3</sup>	50		
<b><u>31 23 23 Controlled Density Fill</u></b>						
11	1.4.1	CDF (Pipe 200 mm diameter)	m	43		
<b><u>31 24 13 Roadway Excavation, Embankment and Compaction</u></b>						
11a	1.8.5	Common excavation, off-site disposal	m <sup>3</sup>	15		
<b>32 - ROADS AND SITE IMPROVEMENTS</b>						
<b><u>32 01 16.7 Cold Milling</u></b>						
12	1.5.1	Milling 200mm wide for permanent pavement restoration, 50mm depth	m	1 975		
<b><u>32 11 16.1 Granular Subbase</u></b>						
12a	1.4.2	Granular subbase	T	40		
13	1.4.2	Granular subbase ( <i>Optional Work</i> )	T	250		
<b><u>32 11 23 Granular Base</u></b>						
14	1.4.1	Granular base ( <i>Optional Work</i> )	T	150		
15	1.4.5	Gravel shoulder restoration 19 mm gravel; 100 mm thk	m <sup>2</sup>	900		
<b>Sub-Total Page 10:</b>						<b>\$</b>

Tenderer's Initial    Owner's Initial

--	--

**CITY OF CAMPBELL RIVER  
TENDER 19-07  
WATERFRONT SEWER UPGRADES PHASE II  
FORM OF TENDER**

Item	MMCD Ref.	Description	Unit	Quantity	Unit Price	Amount
<b><u>32 12 16 Hot-Mix Asphalt Concrete Paving</u></b>						
16	1.5.7	Saw cut asphaltic or concrete pavements in preparation for permanent pavement restoration, all depths	m	2 000		
17	1.5.9	Coordination of Owner's Asphalt Contractor	LS	1		
<b><u>32 17 23 Painted Pavement Markings</u></b>						
18	1.5.2	Paint fog line on Hwy 19A	LS	1		
19	1.5.3	Thermoplastic zebra crosswalk	LS	1		
<b><u>32 91 21 Topsoil and Finish Grading</u></b>						
19a	1.4.1	Imported topsoil	m <sup>3</sup>	20		
<b><u>32 92 19 Hydraulic Seeding</u></b>						
19b	1.8.1	Hydraulic seeding; lawn mix	m <sup>2</sup>	200		
<b>33 - UTILITIES</b>						
<b><u>33 01 30.1 CCTV Inspection of Pipelines</u></b>						
20	1.6.2	CCTV pipeline inspection	m	2 367		
<b><u>33 11 01 Waterworks - Imported Backfill</u></b>						
21	1.8.1/2	Pipe - 200 mm diam. C900 DR18; all depths	m	6		
22	1.8.3	Bends - 200 mm diam.	ea	4		
23	1.8.5	Remove and replace service connection pipe across trench - 19 mm diam.	ea	14		
24	1.8.5	Remove and replace service connection pipe across trench - 25 mm diam.	ea	1		
25	1.8.5	Remove and replace service connection pipe across trench - 38 mm diam.	ea	1		
26	1.8.14	Tie-in - 200 mm to be performed by Contractor; STA 1+688	ea	1		
<b>Sub-Total Page 11:</b>						<b>\$</b>

Tenderer's Initial    Owner's Initial

--	--



**CITY OF CAMPBELL RIVER  
TENDER 19-07  
WATERFRONT SEWER UPGRADES PHASE II  
FORM OF TENDER**

Item	MMCD Ref.	Description	Unit	Quantity	Unit Price	Amount
<b><u>33 30 01 Sanitary Sewers - Imported Backfill</u></b>						
27	1.6.1/2	Pipe - 200 mm diam. PVC DR35; 3m - 4m depth	m	7		
28	1.6.3	Remove and replace service connection pipe across trench - 100 mm diam.	ea	18		
29	1.6.7	Tie-in - 200 mm diam. pipe into existing 200 mm diam. CI pipe	ea	1		
<b><u>33 34 01 Sewage Force mains - Imported Backfill</u></b>						
30	1.8.1/1	Pipe - 150 mm diam. PVC at 3m - 4m depth	m	11		
<b>Option 1 - HDPE Sewage Force main</b>						
31	1.8.1/2	Pipe - 813 mm diam. HDPE DR21 at <2m depth	m	92		
32	1.8.1/2	Pipe - 813 mm diam. HDPE DR21 at 2m - 3m depth	m	1871		
<b>Option 2 - PVC Sewage Force main</b>						
31a	1.8.1/2	Pipe - 750 mm diam. PVC SDR-32.5 PC125 at <2m depth	m	92		
32a	1.8.1/2	Pipe - 750 mm diam. PVC SDR-32.5 PC125 at 2m - 3m depth	m	1871		
32b	1.8.13	750mm Diam. PVC Joint Restraint – <i>(Optional Work)</i>	ea	330		
33	1.8.3	Gate valve - 100 mm, FL - FL	ea	3		
34	1.8.3	Gate valve - 150 mm, FL - H	ea	1		
35a	1.8.3	Gate valve - 200 mm, FL - H	ea	3		
35b	1.8.3	Gate Valve – 200mm H – H	ea	3		
36	1.8.5	Test point	ea	2		
<b>Option 1 - HDPE Sewage Force main</b>						
37	1.8.5	Air release valve chamber; HDPE tee	ea	3		
38	1.8.5	Blow-down chamber; HDPE tee	ea	3		
39	1.8.10	Tie-in - 813 mm diam. pipe into existing 750 mm diam. sewer	LS	1		
39a	1.8.10	Tie-in - 750 mm diam. FL gate valve to 813 mm diam. pipe at STA 0+000	LS	1		
<b>Sub-Total Page 12:</b>						<b>\$</b>

Tenderer's Initial    Owner's Initial

--	--

Item	MMCD Ref.	Description	Unit	Quantity	Unit Price	Amount
<b>Option 2 - PVC Sewage Forcemain</b>						
40a	1.8.5	Air release valve chamber; epoxy coated DI tee on PVC mainline	ea	3		
41a	1.8.5	Blow-down chamber; epoxy coated DI tee on PVC mainline	ea	3		
42a	1.8.10	Tie-in - 750 mm diam. pipe into existing 750 mm diam. forcemain	LS	1		
43	1.8.10	Tie-in – 750 mm diam. FL gate valve to 750 mm diam. pipe at STA 0+000	LS	1		
43a	1.8.10	Tie-in – 600 mm diam. FL gate valve to 750 mm diam. pipe at Sta 0+000; <i>(Optional Work)</i>	LS	1		
<b>Option 1 - HDPE Sewage Forcemain</b>						
44	1.8.11	Bend 813 mm HDPE DR21 - 22.50 degree	ea	2		
<b>Option 2 - PVC Sewage Forcemain</b>						
44a	1.8.11	Bend 750 mm epoxy coated DI - 22.50 degree	ea	2		
45	1.8.11	Romac STS 420 tapping sleeve; 813 mm O.D. to 150 mm	ea	1		
<b>Option 1 - HDPE Sewage Forcemain</b>						
46	1.8.11	Electrofusion couplings - 813 mm OD <i>(Optional Work)</i>	ea	20		
47	1.8.12	EZ valve installation to isolate the Pinecrest drop	LS	1		
<b>33 40 01 Storm Sewers - Imported Backfill</b>						
48	1.6.1/2	Pipe - 600 mm diam. PVC ribbed; 1m - 2m depth	m	70		
49	1.6.1/2	Pipe - 900 mm diam. PVC ribbed; 1m - 2m depth	m	30		
50	1.6.9	Tie-in - 900 mm diam. pipe into new DMH	ea	2		
51	1.6.10	Precast concrete headwall incl trash rack; Langley Type II; 600 mm diam. pipe	ea	3		
51a	1.6.10	Concrete filled sandbag headwalls for 600mm diam. Pipe	ea	3		
<b>Sub-Total Page 13:</b>						

Tenderer's Initial    Owner's Initial

--	--

**CITY OF CAMPBELL RIVER  
TENDER 19-07  
WATERFRONT SEWER UPGRADES PHASE II  
FORM OF TENDER**

<b>33 44 01 Manholes and Catchbasins</b>					
52	1.5.1.1	Manhole base, lid, slab, cover and frame – 1200 mm diam.	ea	1	
53	1.5.1.2	Manhole riser section - 1200 mm diam.	Vert. m	3	
54	1.5.5	Outside ramp manhole - 1200 mm diam.	ea	1	
<b>Sub-Total Page 14:</b>					<b>\$</b>

**SUMMARY**

<b>Sub-Total Page 9:</b>	<b>\$</b>
<b>Sub-Total Page 10:</b>	<b>\$</b>
<b>Sub- Total Page 11:</b>	<b>\$</b>
<b>Sub-Total Page 12:</b>	<b>\$</b>
<b>Sub-Total Page 13:</b>	<b>\$</b>
<b>Sub-Total Page 14:</b>	<b>\$</b>
<b>Sub-Total</b>	<b>\$</b>
<b>GST (5%):</b>	<b>\$</b>
<b>GRAND TOTAL:</b>	<b>\$</b>

The Tenderer shall determine the lower cumulative total for either **Option 1** or **Option 2** and include this lower cumulative total in calculating the total tender value.

Tenderer's Initial    Owner's Initial

--	--