

The following questions and answers are intended to provide an overview of this project.

**1. What is the project?**

Work under this contract consists of the rehabilitation of approximately 3500 lineal metres of existing sanitary sewer mains installing Cured In Place Pipe (CIPP) lining via trenchless technology. The work is being delivered in segments by working from manhole to manhole.

**2. Where are the project locations?**

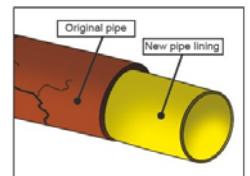
- Laneway off 9<sup>th</sup> Ave., West of Cedar St.
- 7<sup>th</sup> Ave, Dogwood to Cedar St.
- St. Ann's Road, Shoppers Row to 300 block
- 7<sup>th</sup> Ave, Alder St. to Thulin St.
- 9<sup>th</sup> Avenue, Dogwood St. to Thulin St.
- 6<sup>th</sup> Ave, Dogwood Street to Cedar St.
- Alder Street, St. Ann's Road to 7<sup>th</sup> Ave.
- Alpine Rd. Victoria Cres. to Dogwood St.
- Thulin Street, 7<sup>th</sup> Ave to 9<sup>th</sup> Ave.
- Cedar Street, 6<sup>th</sup> Ave. to 7<sup>th</sup> Ave.
- Birch Street, 7<sup>th</sup> Ave to 9<sup>th</sup> Ave.
- Dogwood Street, 3<sup>00</sup> block to 6<sup>th</sup> Ave.

**3. When is the construction work going to take place?**

Rehabilitation work will begin in the Summer of 2022 and is expected to be completed by Fall 2022 .

**4. What is the cost of the project?**

The final cost of the project is \$978,000.00.



**5. How is the project being funded?**

The budget has been approved in the 2022 Capital Plan and is funded by the sewer reserve.

**6. Who will be involved in the project design and construction?**

The work is being completed under a design-bid-built model. Design has been completed by the City's Capital Works and Liquid Waste Services Departments. RFP 19-14 was approved by City Council and awarded to Insituform Technologies Ltd.

**7. How will traffic be managed during construction?**

Traffic management during construction will be the responsibility of the contractor doing the work. The contractor will have traffic control in place ensuring safe passage for vehicles and pedestrians around the work zone at all times.

**8. What do I need to know?**

Your sewer service connection to the sewer mainline will have to be temporarily closed off during the installation. We need your cooperation to avoid back up of the sewer water into your residence or business by preventing water from entering the sewer through any drains during the specified time period. As a result, it is imperative that you do not perform the following household activities.

**Please:** avoid washing clothes, dishes, do not take showers or baths, close toilet lids, do not flush toilets or operate sump pumps connected to the sewer system. Please call Brittany at Insituform 1-780-982-4718 if you have any concerns while the work is taking place.



For more information visit [www.campbellriver.ca](http://www.campbellriver.ca) or contact the Project Team at:

E-mail: [capitalprojects@campbellriver.ca](mailto:capitalprojects@campbellriver.ca) Phone: 250.286.5700

