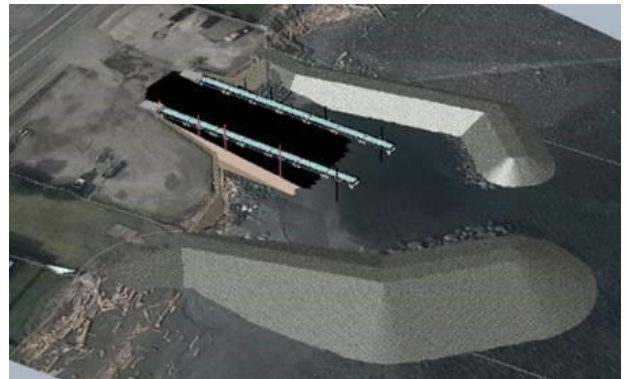


The following questions and answers are intended to provide an overview of the project.

### 1. What is the project?

Work under this project includes upgrades to the Big Rock Boat Ramp – located at 985 South Island Highway – which is currently a free public use facility for recreational boaters in Campbell River.

The new design will focus on improving safety and ease of use for boaters and anglers. A floating dock system will improve traction and water access for boats and trailers during lowest tides. Breakwater improvements will reduce wave action in the launch area and help decrease future boat ramp maintenance requirements.



### 2. Who has been involved in developing the plans?

In 2005, Lanarc Consultants Ltd. prepared a South Island Highway (19A) Conceptual Design, which included conceptual plans for the ramp. In 2013, Outlook Engineering and Landscape Architecture were engaged and developed the improved ramp design through public consultation, including a ramp user group.

In 2017, as a result of increased regulatory requirements, the design team was expanded to include Highland Engineering and CR Engineering who have led the completion of the final design.

### 3. When is the construction work going to take place?

The Big Rock Boat Ramp upgrades will see two separate phases of work, with the first phase – in-water work – planned for this summer. The ramp will close for construction in June and re-open in October 2018.

The second phase of construction includes expansion of the upland areas to improve the parking lot area and neighbouring park. This phase of construction – surface works – will be considered by council for delivery in the future.

### 4. Who will be constructing the work?

The tender for Phase 1 construction will be posted in early 2018.

### 5. What is the cost of the project?

The final cost of the project will be known once the project is successfully tendered. City Council approved \$1.9 million, allocated from Community Works Fund (Federal Gas Tax Funding) for completion of Phase 1 works.



### 6. Were alternative locations considered for a new ramp?

Campbell River's unique location on Discovery Passage, as well as local ferry traffic, make it challenging to find a suitable place to construct a public boat launch. Plans for the Big Rock facility – including the assessment of other boat access options – have been underway for many years, and improvements to the Big Rock Boat Ramp have been determined as the best option for a safe and accessible facility.

### 7. Why is the work happening during the summer season?

We understand spring/summer is a busy time at the ramp, and that the closure will be disruptive, however it is the only time that Department of Fisheries and Oceans regulation allows for in-water work to be completed. The work must occur during the lowest tides of the season so as to minimize any potential impacts to the marine environment.

### 8. Will there be a cost to launch/park when the upgrades are complete?

At this time, there are no plans to introduce launch fees.

### 9. Will highway traffic be affected during construction?

There will be no major disruptions to highway traffic or surrounding areas during the first phase of the ramp upgrades in the spring/summer of 2018. The majority of the work will be in-water, meaning all nearby homes and businesses will be accessible as usual.

### 10. Where should I launch my boat during the closure period?

If you're looking for alternative launching options during construction, please see the map [here](#). Please note: Boat owners are encouraged to research the best option for their use. The map is shared to help with initial direction but does not serve as a recommendation given each boater's individual needs.

